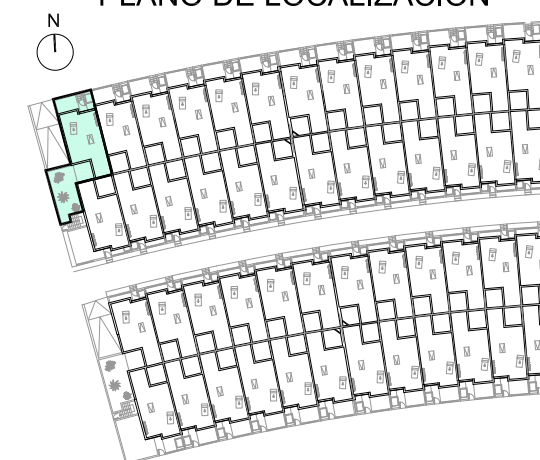




PLANO DE LOCALIZACION



Bloque I - Vivienda N° 1

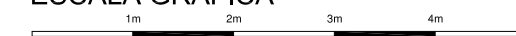
Superficies útiles y construidas B/R

Total superficie útil 57,25 m²
Total superficie construida p.p. ZZ.CC. 83,05 m²

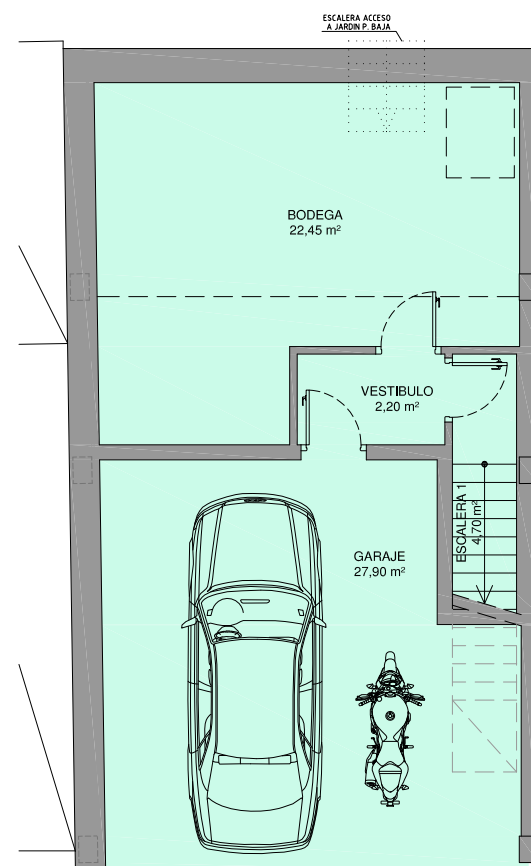
Superficies útiles y construidas S/R

Total superficie útil 92,05 m²
Total superficie construida 109,19 m²

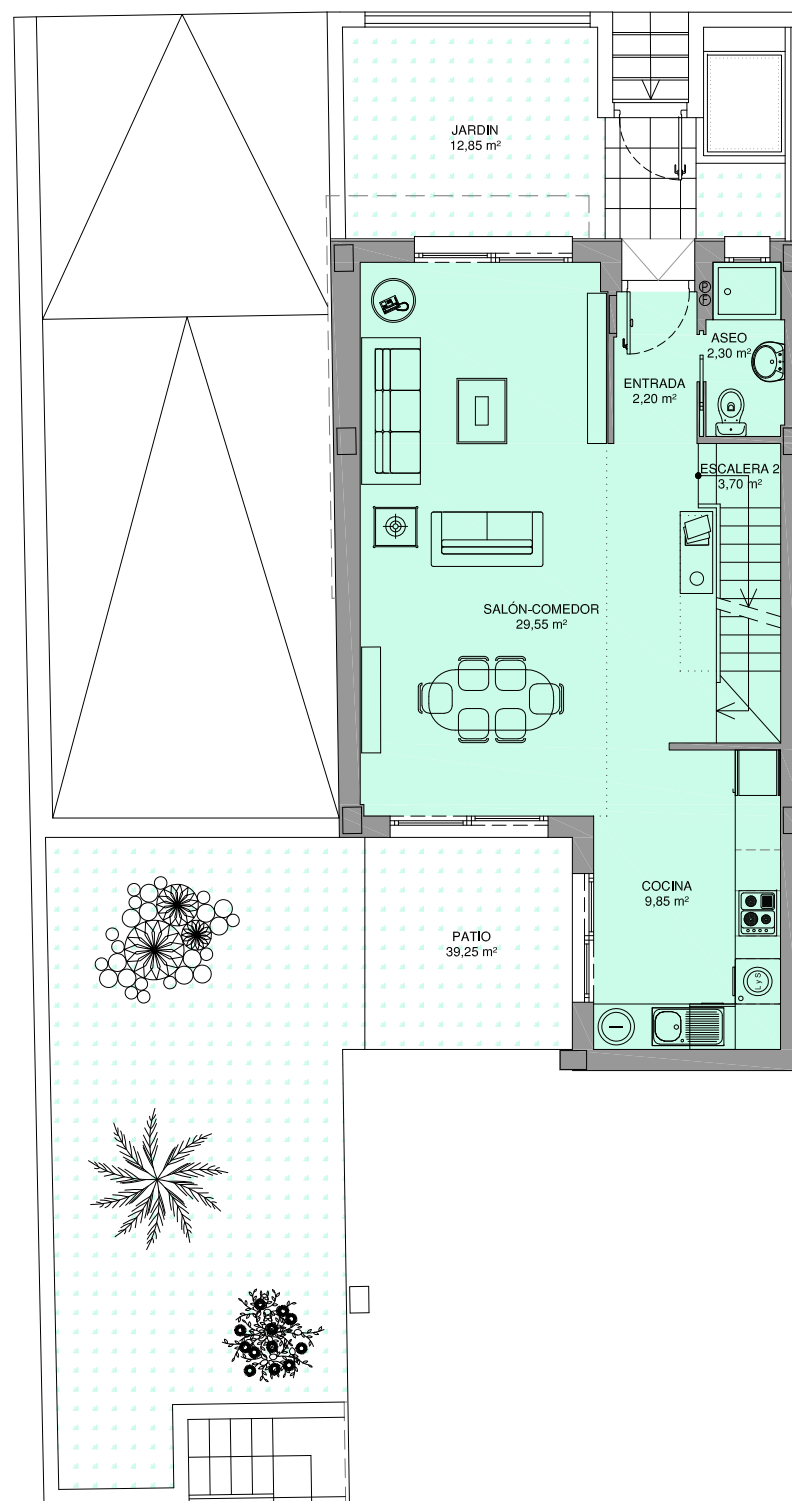
ESCALA GRAFICA



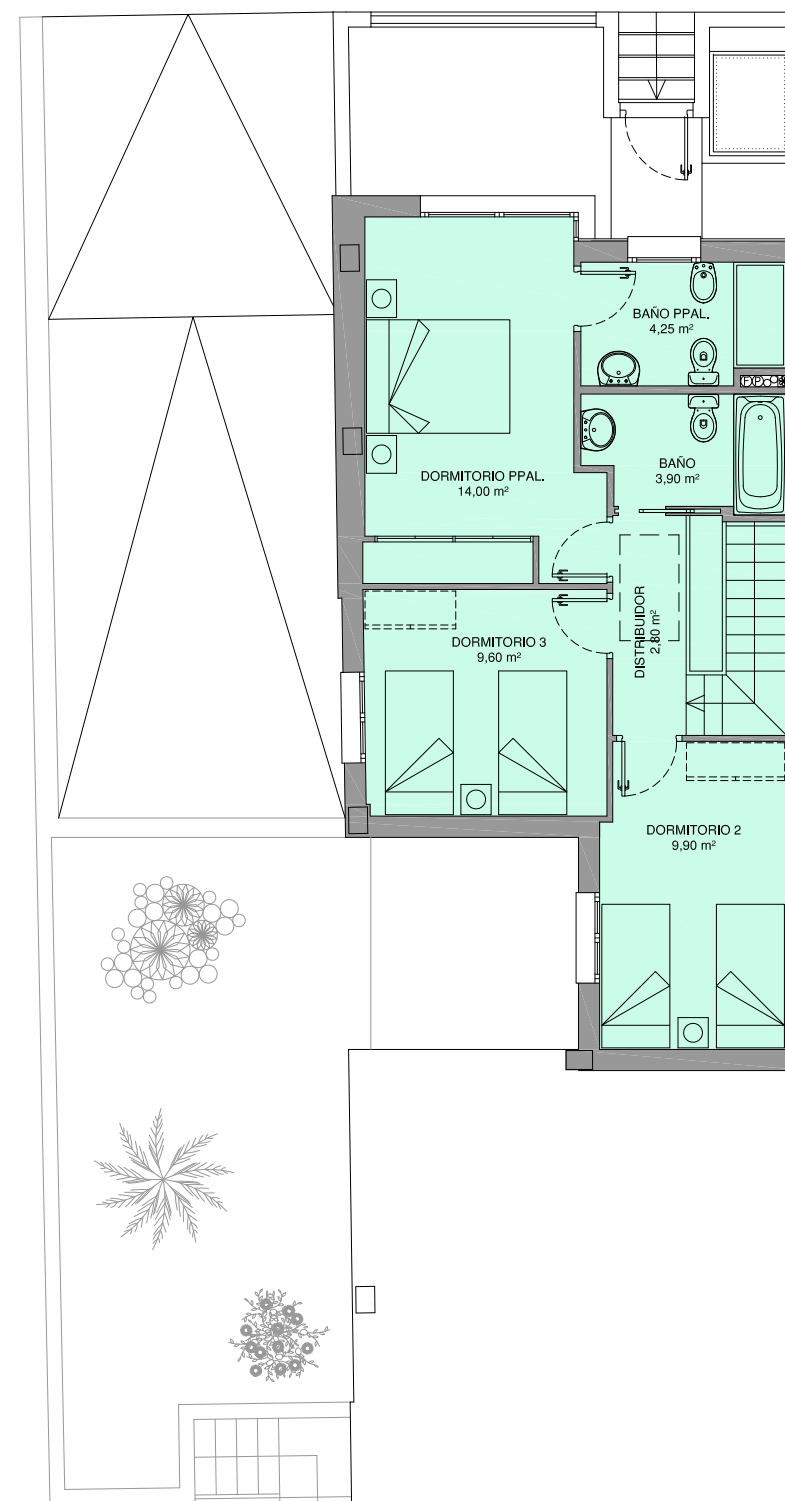
GABRIELROJAS
GRUPO



PLANTA SEMISOTANO



PLANTA BAJA



PLANTA ALTA